

Letter from Our LBS President

Many of you may know that I have had a lifelong career in teaching. That's why I'm fairly used to having people approach me with "Were you a teacher?" or "Are you Ms. Dahms?" I always enjoy the reminiscences these episodes provide, although lately the faces of the students seem to be aging more rapidly than I think they should!

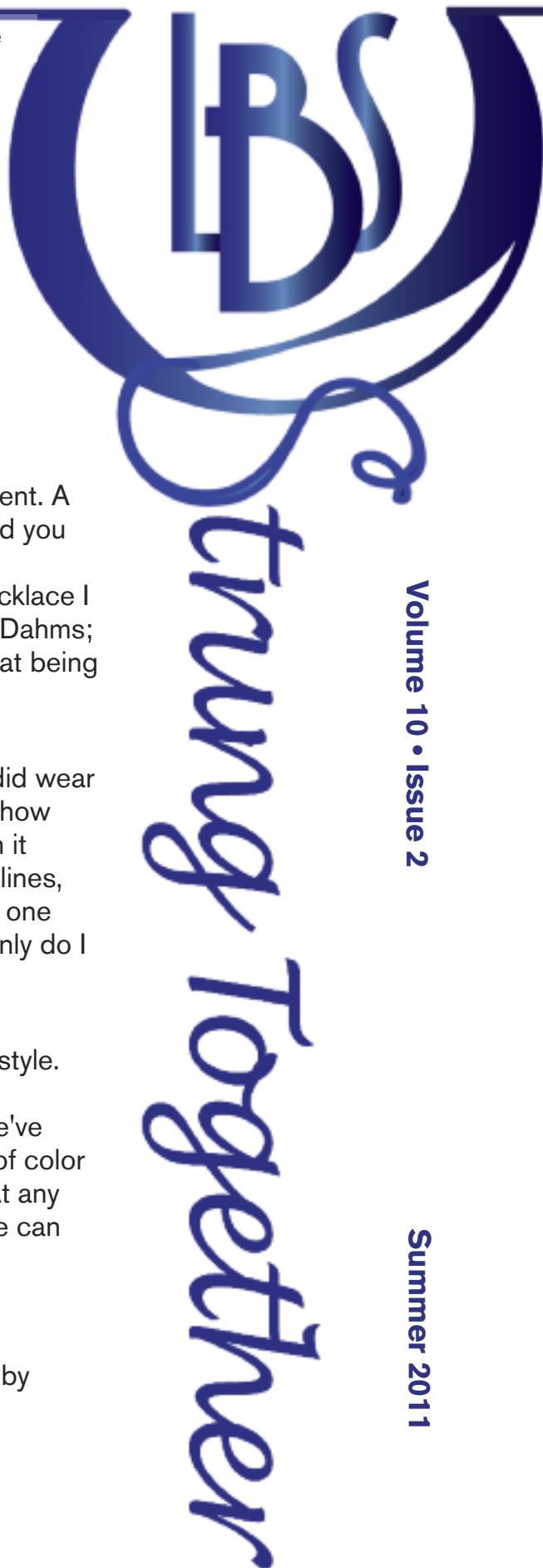
I had one such encounter recently at a coffee shop I frequent. A woman, probably in her early fifties(!) shyly inquired, "Could you be my former teacher?" As we became reacquainted, she confessed that she knew who I was when she saw the necklace I was wearing! "I said to my husband, 'That's got to be Ms. Dahms; she always wore such cool jewelry!'" Imagine my surprise at being remembered for my jewelry!

I have thought about this encounter quite often. I guess I did wear "cool jewelry" back in the day, but I guess I never realized how much my jewelry added to my style! Now years later, when it seems like so much about me has changed (bifocals, age lines, hair color . . .) I have discovered that I have stayed true to one essential part of my style . . . jewelry. I am proud that not only do I still wear cool jewelry; I have learned how to make it!

By making jewelry, we are all inventors of our own unique style. Our choices are limitless; we have countless techniques, materials, and colors from which to choose. Even when we've selected a design that someone else created, the choice of color and materials imprints our personal style onto the piece. At any level of expertise, and using whatever materials we like, we can create our "look." This look is not from a department store showcase; it is truly our own.

Whether we realize it now or not, this just might be a look by which we will be recognized for decades to come!

Helen Dahms, President



Volume 10 • Issue 2

Summer 2011

Bead Rummage Sale

By Ruth Maegli, LBS member

Come one, Come all, to the **Second Annual LBS Bead Rummage** on Saturday July 30 from 10am-4pm.

"Where?" you ask – at the New Berlin Library, of course! You can participate in two ways, sell your beads and beading supplies or come and purchase treasures galore.

The cost is only \$10 per table to sell your items. Forms will be available at the June 13th LBS meeting. You are in charge of your table - pricing, display and selling. All table funds go directly to the Loose Bead Society. Sellers can preorder lunch – the form will provide more information.

There is no entrance fee to the Bead Rummage and we encourage you to attend. Great deals were found by **ALL** last year and we predict the same this year! If anyone is interested in helping set up tables prior to the sale, please contact me at **RMAEGLI@aol.com**.

Membership Update

By Kathy Willmering, Membership Coordinator

We continue to grow and have new and talented people join our group. The influx of fresh ideas has been exciting. We're already 171 members strong, with 23 people being brand new members. Thank you to everyone who has talked up our society to your friends!

Thank you to all our new members for joining! Just in case you haven't met them yet, our newest members are: Rose Bautch, Sue Bennett, Kathy Darland, Laura Dawson, Patty Dunn, Mary Beth Fischer, Julia Gerlach, Sally Gonzalez, Alicia Griffin, Sharon Jandrowski, Diane Kescenovitz, Karen Klimczak, Dawn Lucas, Lillie Radmer, Barb Schoenherr, and Anita Steinhagen Bernard.

Shop Night Review

By Kathy Willmering, Membership Coordinator

This past winter, Loose Bead Society members have been treated to not only one, but TWO shop nights at our wonderful local bead stores.

Knot Just Beads hosted a shop night in January. Kim, the owner, opened the store just for LBS members, during the off hours. Super specials on just about everything throughout the store made all shoppers very happy. Knot Just Beads had just received a beautiful selection of semi-precious stones, and these were a big hit! Teal Paisley Jasper, Snake Skin Jasper and Red Creek Jasper were all the rage! Jaspers are so alluring; you could get lost in their patterns. Everyone had fun and picked up quite a few beads and jewelry-making supplies to carry us through the cold, dark winter.

Eclectica hosted a shop night in February. Irina, the owner, had just returned from the fabulous bead shows in Tucson, and had quite a variety of new pretties for us to ooh and aah over. Thunder Polish crystals covered a whole wall and they were all the rage along with the new copper and brass findings. Loose Bead Society members were treated to some very special discounts (which we all appreciated). It was a fun evening and everyone went home with beautiful beads and findings to turn into beautiful jewelry.

We sure appreciated the great shopping opportunities from Knot Just Beads and Eclectica!

LBS Members Receive **10% OFF** ALL PURCHASES

GLASS BEADS • DELICA BEADS • SEED BEADS • SWAROVSKI CRYSTALS



**JSM
BEAD COOP**

931 N. 8th Street
Sheboygan, WI 53081
(920) 208-BEAD (2323)
Fax: (920) 208-2326
www.JSMBeadCoop.com
info@jsmbeadcoop.com

HOURS: Tues - Sat, 10am - 7pm; Closed Sunday & Monday

SEMI-PRECIOUS STONES • PRESSED GLASS • BEAD TOOLS • BEAD CLASSES

ECLECTICA

Beads from around the World

Check Facebook or our website for:

Upcoming Trunk Shows

Monthly Class Schedule

Make & Take Events



www.eclecticabeads.com

LBS Members
Receive
10% OFF
ALL BEADS & FINDINGS

April - Do The Cross-Weave

By Annabelle Havlicek

At the April 25th meeting, Kathy Willmering predicted we had 106 people. Wow! My table had two newcomers and a great table captain who did a great job encouraging the newcomers to keep working on their Cross-Weave bracelet.

April's Table Talk

What did you complete at the Bead Retreat? There was some absolutely gorgeous jewelry pieces created at the Bead Retreat. Check out this picture of a felted bracelet.



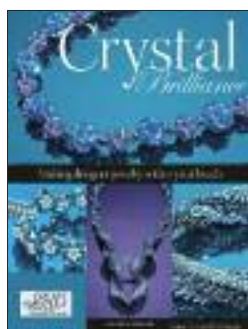
They Said to Ask Anna, and So We Did!

By Brenda Schweder

May's program took advantage of a local treasure, Anna Elizabeth Draeger! Anna spoke on a topic for which she knows a fair amount – Anna herself. The wearer of a lot of (big) hats in her career-life, she's also mother to two adorable boys.

First and foremost, Anna is a fabulous beader. Her designs transcend basic stitch patterns and become so very, well . . . Anna! Her work is known for featuring gobs of blingy crystal and certainly speaks for itself.

Associate Editor of *Bead&Button* magazine (Kalmbach Publishing Company), Anna also pens – or shall I say types – the popular question and answer column, "Ask Anna" on B&B's blog. She has also authored *Crystal Brilliance: Making Designer Jewelry with Crystal Beads* and is a nationally recognized teacher including her **Bead&Button Show** offerings each year.



Anna also is a CREATE YOUR STYLE with SWAROVSKI Elements Ambassador, along with Milwaukee-area peers Debbi Simon and me. The designation is held by 25 jewelry designers in North America.

June - A Walk Down the Path

By Annabelle Havlicek

The Beadin' Path, located in Freeport, Maine reminds me of a trip to the seashore. The website (www.beadinpath.com) smoothly shushes past, just like ocean waves washing over your feet.

Easy, breezy colorful bead selections make you look at various sized windows (is that a bikini bottom or a cool necklace?!????). The first thing you might notice is a **green** envelope above an empty box with GO to the right of it. Next to the **green** envelope in big letters – "**We send coupons!**" (You should put your email address here and press GO!)



The bright colors and playful typeface will remind you of those hip boutiques you can't wait to shop in. You'll feel the same way when you see all the vintage, Lucite and plastic beads. They even have Beach Beads (told you I thought I was at the seashore).

Heather DeSimone from the Beadin' Path will be our guest at the June 13 meeting (**this meeting is one week earlier than our normal meeting**) and this is the Monday directly after the Bead&Button Show.

Heather told our VP of Programming, Maggie Roschyk, that she plans on teaching us new skills and introducing us to new products at our June program, so prepare yourself. You might want to go to www.beadinpath.com and check out some of Heather's Beading Articles.

From the Home Page, click on Beading Info & Articles, then click on "What's in Store with Heather" and check out any number of topics. Of course you can also check out Weekly Beadditudes with Dara, or even read the Bead Blog Archives.

One topic that will be covered at the June meeting will be piercing and riveting vintage metals with the Crafted Findings tools distributed by Beadin' Path. These tools make it amazingly easy.



Heather promises to also teach us layering metals with Lucite filigree and stitching into Lucite filigree which allows you to integrate the Lucite into the materials you are already working with.

So don't miss the June program because I promise you, it certainly **WON'T** be a day at the beach.

Field Museum Trip – An Update

By Annabelle Havlicek

If you visited the Field Museum in November on the President's Bus Trip and went through the Grainger Hall of Gems, then you'll recognize these two names: Mrs. Thuy Ngo Nguyen and Lester (David, Maureen) Lampert. On the way home I promised I would do further research into these people and here's what I uncovered.

Mrs. Thuy Ngo Nguyen

The Grainger Hall of Gems was full of beautiful gems donated by Mrs. Thuy Ngo Nguyen. I asked a friend of mine at work, Lai Du, how to pronounce that name and he gave me this phonetic example: Twee No Wing. Lai said that Nguyen is a very common last name and that it was her family name. When she married, she would only add Mrs. to her name.

Mrs. Nguyen came to the United States in 1972 with her husband and infant son, fleeing the war in Vietnam. Through hard work and sacrifice, their family became an example of the American Dream.

Her husband was a doctor and through the years they raised a family of four healthy boys. They still live in the Chicago area.

To date, she is the youngest living benefactor to the Field Museum. In addition to donating her jewelry and gems (the Chalmer's Topaz), Mrs. Nguyen donates to Vietnamese charities.

Lester Lampert, Inc. (David/Maureen)

The Lamperts have been creating jewelry in Chicago for four generations. Lester Lampert's grandfather opened a jewelry manufacturing business in 1920. His dedication and commitment to quality, creativity and excellence established the benchmark for future generations of the "Lampert Look."

The Lester Lampert 11,000 square foot boutique store is located on Oak Street in Chicago. It has four floors and is dedicated to the art of fine jewelry. One complete floor is dedicated to state-of-the-art jewelry creation and repair.

On the Lester Lampert web page, you'll see a picture (link) to "the Museum Project . . . our collaboration with

the Field Museum." That link shows some of the breathtaking pieces the Lamperts produced for the Field Museum.

The Chalmer's Topaz

This topaz gem weighs 5,899.5 carats and was named for former Field Museum trustee William J. Chalmers. It is

one of the largest cut topaz gems in the world.

The Chalmer's is brilliant white with a blue cast and is an oval cut Brazilian topaz originally cut by Walter Kean. Its value has never been assessed. The original owner was Mrs. Thuy Ngo Nguyen.



Ruby and Diamond Necklace
This glittering necklace showcases 13 rubies, totaling 90 carats and hundreds of sparkling round and accent diamonds, set in platinum.

© 2008 The Field Museum



**STORE
CLOSING SALE
CONTINUES.**

CHECK OUT OUR WEBSITE
FOR DETAILS AND
STORE HOURS!



NOTTINGHAM

BEADS, GEMSTONES & MORE

630 MILWAUKEE STREET DELAFIELD, WI 53018
262.646.8335 WWW.NOTTINGHAMBEADS.COM

Giralté Gems and Beads



MARGE IS RETIRING!

**She's closing her store —
come in for its final days!**

262-375-5501
Monday-Thursday: 10am-5pm
Friday: 10am-8pm
Saturday: 10am-5pm
Sunday: 12-4pm

W62 N580 Washington Avenue
Cedarburg, WI 53012
www.giraltégemsandbeads.com

Ever Heard of the JFA Show?

By Jackie Hillman

I, along with two other LBS friends, attended the most recent JFA show in Rosemont, Illinois, held April 14-17. What is JFA? It stands for Jewelry, Fashion & Accessories, and it's held every three months or so. It alternates between the Donald E. Stephens Convention Center in Rosemont (close to O'Hare) and the Renaissance Schaumburg Hotel and Convention Center in Schaumburg. These shows are a little larger than the **Bead&Button Show**, and they feature everything from fine and costume jewelry, to purses, scarves, makeup, food and drink mixes, clothing, housewares.

Of special interest was the inclusion of more vendors with beads, findings, stringing materials, charms, etc. – all the fun stuff we beaders love to play with! Also featured were free beading seminars conducted by Stacey Brooks (Stacey's Unique Boutique) and make-n-take demonstrations held twice a day throughout the four days of the show.

The best part, though, is that admission is free if you pre-register on-line, otherwise it's \$5 at the door. You need no other formal credentials (no business tax ID) to buy! You pay wholesale prices, the same amount stores pay for their merchandise! Just sign up as a buyer and show your driver's license to verify you are who your badge says you are! It also helps to either wear comfy shoes and carry a backpack or bring a rolling carryon. (Believe me, you'll need it!)

The next show is June 3-5 in Schaumburg, and the show after that is July 21-24. The July show will introduce the CHA Craft SuperShow section which consists of 200 booths filled with craft and hobby projects, supplies and services.

For more information or to register please visit www.JFASHOW.com.

Don't Judge a Kit by Its Cover

By Amy Smith

Has this happened to you? You buy an awesome kit or you buy all the beads to make a project out of a magazine. You get home, set up all your shiny new beads or unpack your kit and begin to bead. After a while, things just aren't working out the way you thought they would. Is it you or is it the directions?

I bought a kit – it looked really great and I thought, “No problem – it'll be a snap.” Nope. I made that pendant at least four times before I got it right. There was no photo – only written instructions and I had a tough time following them. The instructions referred me to a photo on the Internet – only to find that there was only one teeny photo that would not enlarge. Not very helpful to someone who needs visuals and thread paths. I was extremely frustrated to say the least.

Another time I wanted to make something from a magazine. I kept getting to the same spot and I'd make the same mistake over and over. I don't remember how long it took before I figured out what I was doing wrong and where, but it took a lot of attempts and swearing. Again, there were only written instructions – no visuals.

Are you a visual learner, one who learns well from written instructions, or someone who needs to see the technique demonstrated? If you can figure out how you learn best, you can avoid some of the pitfalls that we've all fallen into at one point or another.

The best instructions (in my opinion) are those that combine visuals (thread paths) and clearly written instructions along with photos (there can never be too many photos).

If you plan to buy a kit, you might take the time to ask your friends if they have any experience with that vendor's kits and whether the directions are clear and easy to follow. It might also be a good idea to find out what kind of an instructor someone is prior to signing up for their class.

If you have trouble with a kit or directions in a magazine, email the vendor to see if there have been corrections to the directions, or look at the magazine's website to see if corrections have been posted. Many beading magazines take a lot of time to make sure that directions are clearly written and understandable. The editors also often bead the projects themselves to better understand the process.

I'd also suggest looking at some beading books to see how the directions for projects are written and what kind of directions you prefer. I found a pattern for one of the kits I was having trouble with in a book written by the artist – with

continued on page 9



Shop ONLINE and
take 25% off your
jewelry order.
Use the
coupon code
LOOSE during
check out.

Chris Mode
www.CreativeMode.com

2011 Spring Retreat

By Kat Feldman

We're sorry if you had to miss the 2011 Spring Retreat because we had a blast! From the time we arrived until the last beader left on Sunday, the energy was electric. It was wonderful to see all the interaction.

Brenda's **Make Your Own Findings** demo was inspiring, not to mention the delicious dessert. I heard great things about Cristie's, Jan's, and Julie's classes and attended a couple of them myself.

The finished metal pieces and beaded colorways in the **Clinging Vine** and **Seeing Stars** projects I saw were beautiful! Being able to see some of the items that were made at Table Talk in April was wonderful. (See the LBS Facebook page for photographs.)

Glass-blowing at Hot Shop Glass was so interesting. Amanda let me hold the molten glass on the metal rod. It was heavy! It is certainly not an art form for the faint-hearted. The beautiful vase was displayed at Funky Hannah's Saturday night sale.

Terri Ann's cookies were a special treat when we stopped by Fox Den for some shopping at the new store on the way to the Radisson. Connie Ralf won a copy of *Beading Across America* in a drawing at Fox Den for LBS Members.

Ah, the Radisson. How lovely to look out at the Harbor while breakfasting or while sitting in Open Beading. So beautiful was "Spring's almost here sunshine" trying to break through the cold blue of the sky and water. The lunches were delicious and offered something for everyone.

We hope that you'll come next year so we can share all of this good stuff in real time.

Thank you, Special Events Committee, for a lovely Retreat. I'm longing for next year.



324 Main Street • Racine, WI • www.funkyhannahs.com

262-634-6088

LBS Members Receive
10% OFF
ALL BEADS & FINDINGS

A beautiful shop located between Milwaukee & Chicago in charming, historic, downtown Racine. Beautiful beads & Inspiring classes.

Book Review *By Sue DeLay*

MACDUFFEE, MELODY. LACY WIRE JEWELRY. (2010) WAUKESHA: KALMBACH BOOKS.

Loving the medium of wire and intrigued by the cover photos, spending time in the pages of this book became a priority when I received it as a gift.

What struck me first was the extensive **Technical Basics** included in the back of the book. These basics are the foundational structures for each of the pieces included in the book rather than basic wire techniques.

A short tools and materials section are both laid out clearly for the reader in the back of the book as well. Step-by-step directions and clear, close-up, corresponding photographs make the book a delightful read as well as a hands-on workshop.

Flipping through the photographs throughout the book, each piece defines its own style. The loops and twists of wire show delicacy and detail in the work of the artisan. The author categorized the jewelry she created, displayed, and gave directions for in the book by how the wire was used (filigree, curlique lace, twisted, bezels, and sculpted). She utilized Krobo beads in several of the designs in the book and tells the story of how she became involved with the West African tribe that makes these beads.

Incidentally, you can also learn more about this story in the June 2011 issue of *Bead&Button* magazine.

With every book, we grow. A part of that author's world becomes a part of us and will later translate into our own art. Take a glance at this book and see how it might change your perspective.



Christi, Christi, Christi!!!

By Helen Dahms, President

LBS members who have taken classes with Christi Friesen or have visited her booth at the **Bead & Button Show** know what a dynamic, talented, and fun individual Christi is. Members who have yet to meet Christi are about to find out!

Christi's work in sculptural polymer clay is exciting, whimsical, and fun. The same can be said about Christi as a teacher and speaker! The Loose Bead Society is thrilled to announce three spectacular events with the one and only Christi Friesen this August 13th, 14th, and 15th. Christi will teach two weekend workshops and address the membership at our August meeting!

The Saturday workshop will be "Splish-Splash, Flitter-Flutter." No matter what your skill level (from beginner to pro), Christi will keep you hopping as you utilize polymer clay, mixed media, resin and fibers to create pebbles, water lily leaves & flowers, coral, sea plants and fish. Then the class will fly to new heights as you design a magnificent moth or an eclectic sprite.

Sunday's offering is "Art Nouveau Blooms & Steampunk Foliage." Here you will create leaves and flowers –all kinds of different ones! Then you will use these leaves and flowers to create a dramatic necklace, or pendants, brooches or wall pieces. Your pieces can be created in a flowing, sensual Art Nouveau style, or an edgy, vintage Steampunk style (or maybe some of both!).

Christi is an extremely energetic and capable teacher, but we will have to limit the number of students for each workshop. To accommodate as many members as possible, the weekend workshops will be held at Mt. Mary College. Monday's membership meeting will be at New Berlin Public Library. Further details and workshop registration materials will be available soon. These events are not to be missed!



Briolette Beads and More

By Betty Biese

During the last weekend of February, **Briolette Beads and More** became my destination bead shop when Leslee Furmin came to teach her Crystal Elements I, II, III, Crystal Lace and Crown Jewels Collection. In attendance were beaders from Ohio, Indiana, Wisconsin, and the greater Chicago area. Not a chair sat empty in the well-lit classroom that comfortably accommodated 24 students. Leslee has a great teaching style that easily handles a class of that size. If you haven't done so already, check out her classes at the **Bead&Button Show!**

Briolette Beads and More, a sister store to Caravan Beads Chicago, is located in the village of Forest Park, IL, with easy access off the Eisenhower expressway. They carry "a unique selection of craft supplies for the beader, altered artist, rubber stamper, or paper crafter." In support of Leslee's classes, they held a trunk show of Swarovski Elements, made up reasonably priced kits for each class piece, and a 'starter kit' for the beginning stitcher consisting of bead mat, Fireline, needles, and scissors. What's more, they kept a running tab that you settled at day's end.

Leslee sold large, specialty Swarovski crystals used as centers for the Crystal Element pieces. Kits for her signature pieces were also available.

Briolette Beads is not the largest bead store around, but the staff is very friendly and accommodating. After I mentioned seeing a kit on the Caravan Beads' website, they had it in the store by the end of the day! For budding artists, they carry a selection of patterns that are sold on consignment. (A note to our members: Kate will offer a 10% 'make you feel at home' discount if you show your LBS Card.)

With the successful appearance of this guest artist, Briolette Beads plans on hosting other teachers. I can hardly wait!

Service Events

By Michele De'Brabant, Community Service Coordinator

Cinderella Project

On March 26th, over 90 young ladies from Milwaukee participated in the Gadzuric Foundation's Cinderella Project at the Destiny Youth Center. Each girl had a personal shopper who assisted her in choosing a beautiful, gently-used and clean, if not new, prom dress. Thank you to the many LBS members that donated the handmade, gorgeous jewelry for this event.

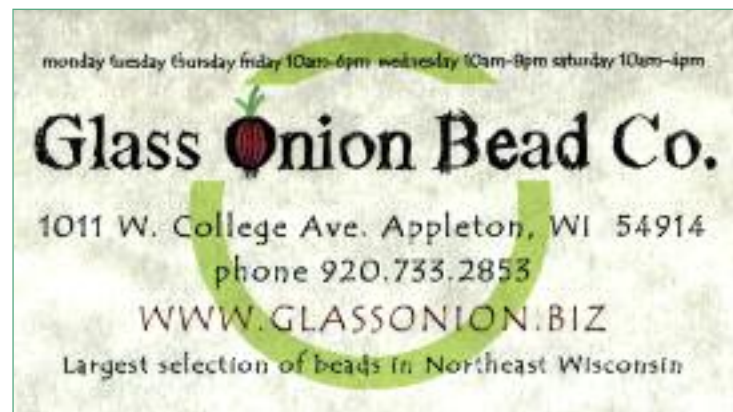
Thank you also to the LBS Community Service committee and LBS members that had a fantastic time helping the young ladies accessorize their dress with our donations of beautiful baubles and jewels, including bracelets, necklaces, earrings and even headbands.

The smiles and excitement of these girls and their parents, siblings and friends made this such a worthwhile and successful community service project for LBS.

Badger Association for the Blind and Visually-Impaired

Ten LBS members volunteered with lead teacher, Web Goddess, Traci Otte, to teach and complete a beautiful strung bracelet, with an emphasis on crimping, so that Badger members could complete a bracelet on their own, as part of this Life Skills Class. The 10 students were happy and proud as they wore their new bracelets, accompanied by two family members and five well-behaved and very cute service dogs.

Jan Falk will teach Felted Bead class for the Badger students this fall. We will need 10 volunteers to teach the class with Jan. If you are interested, please let Jan know at our next meeting. Or you can email her at communityservice@loosebeadsociety.org, or call her at 414-588-8573.



monday tuesday thursday friday 10am-6pm wednesday 10am-8pm saturday 10am-4pm

Glass Onion Bead Co.

1011 W. College Ave. Appleton, WI 54914
phone 920.733.2853

WWW.GLASSONION.BIZ

Largest selection of beads in Northeast Wisconsin

Upcoming Fall Community Service Event

This will be held at the Community Advocates Homeless Shelter on Saturday, November 12th from 1-3pm. We need volunteers! More information to come . . .

Loominosity 2011

By Julie Miller, President Elect

Mark your calendars for the first weekend in November and start planning to participate in **Loominosity**, a sale and exhibit of handmade jewelry, wearable items and gifts.

Participating in this show was a major initiative for our society in 2010, and we are pleased to be cooperating again with the Wisconsin Handweavers Guild. We will have more space this year for selling jewelry, for exhibiting member work and for demonstrations.

Think "boutique" as you start planning ahead for what you'll sell. Keep in the back of your mind the idea of exhibiting the piece you design for the Royal Wedding challenge. You know you enjoy sharing your love of beading, so remember that there will be plenty of opportunities to demonstrate whatever aspect of beading you're passionate about.

The four-day show runs from Thursday, November 3 through Sunday, November 6. Show hours will be Thursday, 10am to 8:30pm; Friday, 10am to 4:30pm; Saturday, 10am to 4:30pm; Sunday, 1 to 4pm. The event will be held at New Berlin Public Library in the Community Room, the same location as our monthly programs.

Details will be announced at future programs, on our website and through email.



FOX DEN BEADS
A HUGE SELECTION OF MIYUKI® BEADS!

www.FOXDENBEADS.com

Now Featuring: **SWAROVSKI CRYSTALS & PEARLS!**

Approx 4,500 unique Miyuki beads in stock. We stock every color we can get our "paws" on in the following bead types:

ALL DELICAS: 15/0, 11/0, 10/0 & 8/0 plus DBC & DBLC
15/0, 11/0, 8/0 & 6/0 SEED BEADS - - DROPS & TINY DROPS
NEW TILA BEADS - 1.8, 3, & 4mm CUBES - 10/0 & 8/0 TRIANGLES
1.5, 3, & 6mm BUGLES - 6 & 12mm TWISTED BUGLES - 15C's
NEW STORE FRONT LOCATION! 712 Grove Ave - Racine, WI - 53405
STORE HOURS: TUE - FRI: 10am-6pm, SAT: Noon-4pm, SUN & MON: Closed
Other hours happily by appointment! Call (262) 634-2323 Terri Ann Fox - Proprietress

LBS MEMBER DISCOUNT: 10% OFF
REGULAR PRICED MIYUKI PRODUCTS

continued from page 5

new and improved directions!

Have you ever worked ahead in a class only to find out that there was a step up or some other step that you missed but the piece looked fine to you? If you're anything like me, you ripped it out and started all over again.

My father taught me to read the directions all the way through before beginning a task. Well, I obviously don't always follow his instructions, but now I do read all the way through a pattern before beginning.

To get the best instruction from your Bead& Button classes, ask yourself this – is this a class that I'm taking to learn a new skill (is it a process class – making glass beads for example) or am I making a project that will require me to follow specific directions?

No matter what kind of class it is, go at your own pace. There will always be people who finish the project and people who don't finish (usually me). Be sure to ask your instructor questions if you have them.

Don't forget your notebook and your camera! If it's a process class, you'll want to take notes and photos and lots of them. Some instructors don't hand out instructions but will give you lots of information verbally and in demos. If it's a project class, you'll still want to take notes – you're learning from the best and you never know what tips they might give you!

2011 Board Members

Helen Dahms

President

Julia Miller

President Elect

Maggie Roschyk

VP-Programming

Kat Feldman

VP-Special Events

Judy Markworth

Secretary

Amy Smith

Treasurer

Brenda Schweder

Past President

Kathy Willmering

Membership Coordinator

Traci Otte

Website Coordinator

Michele De'Brabant

Community Service Coordinator

*The Special Events Committee
cordially invites you to participate*



*in the 2011 Design Challenge
A Royal Wedding*

In celebration of the Royal Wedding, an entry is requested for the 2011 Design Challenge.

Design pieces must consist of at least one bead.
Design pieces must be something you could wear or carry to the wedding.

Examples include, but are not limited to:

Purse	Hat	Earrings
Brooch or Pin	Tiara	Shoes
Bracelet	Belt	Necklace
Gloves	Ring	Clothing

Please include a snippet (less than 150 words) from your diary entry of April 29th about your experiences at the royal affair (may be handwritten or typed).

There are three entry levels: Beginner, Intermediate & Advanced. Finished pieces should be turned in at the July 18th meeting. Winners will be announced at the Reception (our meeting on September 26th).

For more information and additional details, contact:

Kat Feldman, VP-Special Events
vpspecialevents@loosebeadsociety.org

Corporate Members of the LBS

Kathy Willmering, Membership Coordinator

Corporate Sponsor
Kalmbach Publishing Company
(Publisher of Bead&Button, BeadStyle and Art Jewelry Magazine)
 21027 Crossroads Circle, P.O. Box 1612,
 Waukesha, WI 53187-1612
 262-794-8776 • www.beadandbutton.com

Corporate Members
Creative Mode
 Creative Mode, LLC • 2934 County Road MN
 Stoughton, WI 53589
 608-838-8011 • www.creativemode.com

Eclectica
 18900 W Bluemound Road • Brookfield, WI 53045

262-641-0910 • www.eclecticabeads.com
 LBS Member Discount: 10% off beads and findings

Fox Den Beads
 712 Grove Avenue • Racine, WI 53405-2517
 262-634-6088 • www.foxdenbeads.com
 LBS Member Discount: 10% off regular priced Miyuki products

Funky Hannah's Beads & Art
 324 Main Street • Racine, WI 53403-1029
 262-634-6088 • www.funkyhannahs.com
 LBS Member Discount: 10% off beads and findings

Giraffe Beads & Yarn
 W62 N580 Washington Avenue • Cedarburg, WI
 53012-1926 • 262-375-5501
 www.giraltgegemsandbeads.com

Glass Onion Bead Company
 1011 W. College Ave • Appleton, WI 54914-5259
 920-733-2853
 www.glassonion.biz

JSM Bead Coop
 931 N 8th Street • Sheboygan, WI 53081-4004
 920-208-2323 • www.jsmbeadcoop.com
 LBS Member Discount: 10% off all purchases

Nottingham Beads, Gemstones & More
 630 Milwaukee Street • Delafield, WI 53018-1518
 262-646-8535 • www.nottinghambeads.com